

HB-22090050-HJ-67C1

2023 9

H EI C.L .

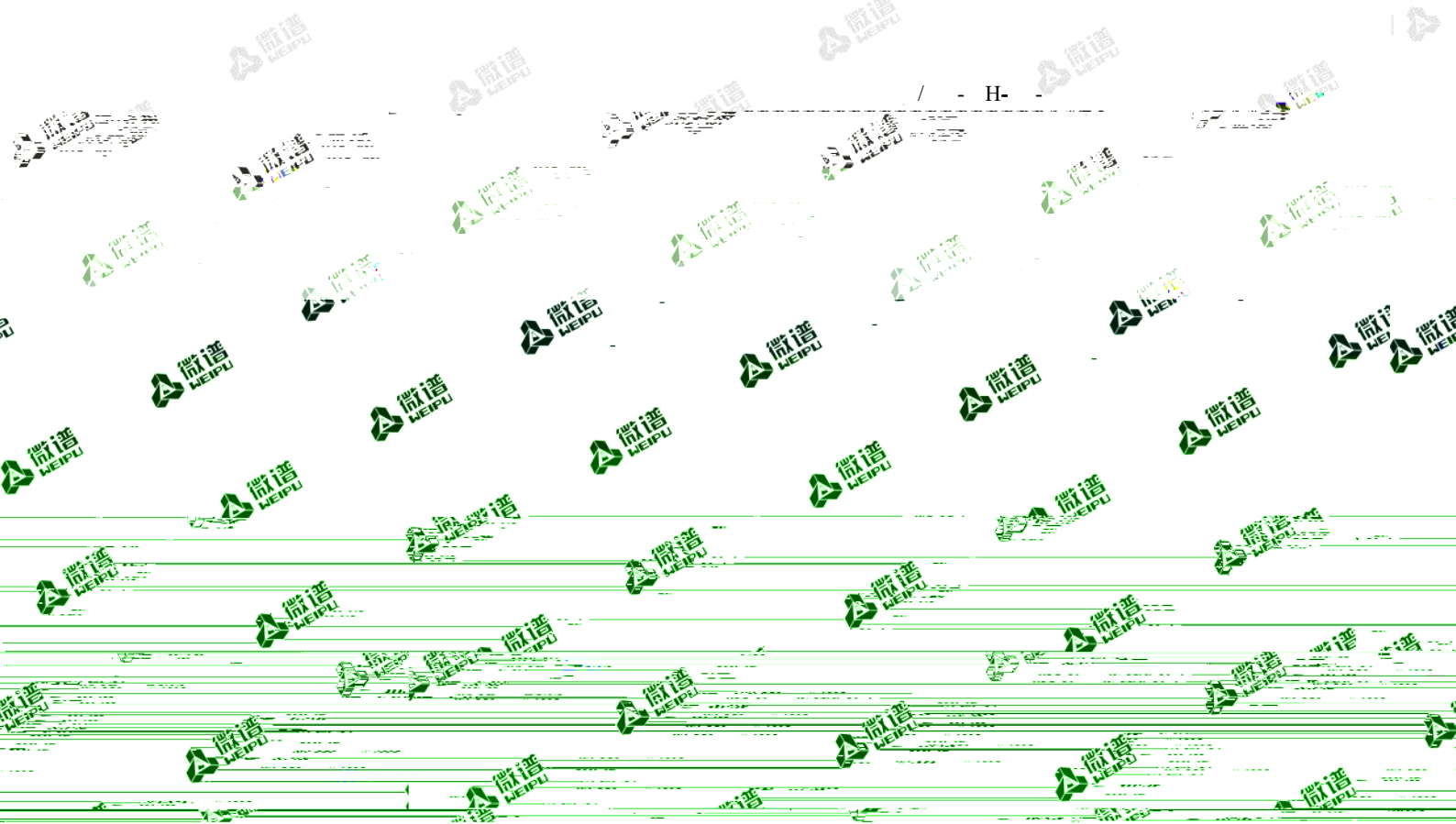


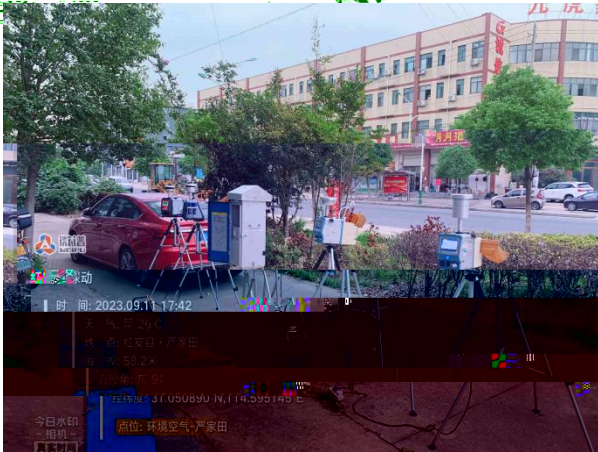
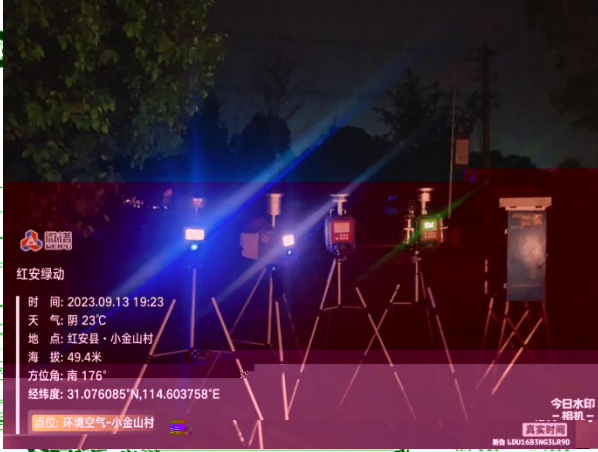
		5	
		5	
	2023.09.11-2023.09.13		2023.09.14-2023.10.06

吴鹏

刘玲玲

伍志威





		2023.09.12 16:36-	36		
					E
			/ 3	/ 3	I- E / 3
	2,3,7,8- ₄ CDF	0.0082	0.0004	0.1	0.00082
	1,2,3,7,8- ₅ CDF	0.0082	0.0005	0.05	0.00041
	2,3,4,7,8- ₅ CDF	0.0089	0.0005	0.5	0.00445
	1,2,3,4,7,8- H ₆ CDF	0.0078	0.0005	0.1	0.00078
	1,2,3,6,7,8- H ₆ CDF	0.0063	0.0005	0.1	0.00063
	2,3,4,6,7,8- H ₆ CDF	0.0057	0.0005	0.1	0.00057
	1,2,3,7,8,9- H ₆ CDF	N.D.	0.0005	0.1	0.000025
	1,2,3,4,6,7,8- H ₇ CDF	0.025	0.0004	0.01	0.00025
	1,2,3,4,7,8,9- H ₇ CDF	0.0030	0.0006	0.01	0.00003
	₈ CDF	0.024	0.0006	0.001	0.000024
	2,3,7,8- ₄ CDD	0.0012	0.0006	1	0.0012
	1,2,3,7,8- ₅ CDD	0.0016	0.0006	0.5	0.0008
	1,2,3,4,7,8- H ₆ CDD	0.0008	0.0006	0.1	0.00008
	1,2,3,6,7,8- H ₆ CDD	0.0017	0.0005	0.1	0.00017
	1,2,3,7,8,9- H ₆ CDD	0.0012	0.0007	0.1	0.00012
	1,2,3,4,6,7,8- H ₇ CDD	0.012	0.0006	0.01	0.00012
	₈ CDD	0.042	0.0006	0.001	0.000042
					0.011



2023.09.11 18:29- 16:29					
		/ 3		E	
				I- EF E / 3	
2,3,7,8- CDF	0.0055	0.0004	0.1	0.00055	
1,2,3,7,8- 5CDF	0.0068	0.0004	0.05	0.00034	
2,3,4,7,8- 5CDF	0.0068	0.0004	0.5	0.0034	
1,2,3,4,7,8- H ₆ CDF	0.0079	0.0008	0.1	0.00079	
1,2,3,6,7,8- H ₆ CDF	0.0072	0.0004	0.1	0.00072	
2,3,4,6,7,8- H ₆ CDF	0.0069	0.0004	0.1	0.00069	
1,2,3,7,8,9- H ₆ CDF	0.0004	0.0004	0.1	0.00004	
1,2,3,4,6,7,8- H ₇ CDF	0.033	0.0004	0.01	0.00033	
1,2,3,4,7,8,9- H ₇ CDF	0.0028	0.0005	0.01	0.000028	
8CDF	0.039	0.0005	0.001	0.000039	
2,3,7,8- 4CDD	N.D.	0.0006	1	0.0003	
1,2,3,7,8- 5CDD	0.0010	0.0006	0.5	0.0005	
1,2,3,4,7,8- H ₆ CDD	0.0007	0.0005	0.1	0.00007	
1,2,3,6,7,8- H ₆ CDD	0.0013	0.0004	0.1	0.00013	
1,2,3,7,8,9- H ₆ CDD	0.0009	0.0007	0.1	0.00009	
1,2,3,4,6,7,8- H ₇ CDD	0.011	0.0006	0.01	0.00011	
8CDD	0.041	0.0005	0.001	0.000041	
				0.0082	

*** **

2023.09.11 17:45- 15:45					
		/ 3		I- EF	E / 3
2,3,7,8- CDF	0.0089	0.0004	0.1	0.00089	
1,2,3,7,8- 5CDF	0.0095	0.0004	0.05	0.000475	
2,3,4,7,8- 5CDF	0.014	0.0004	0.5	0.007	
1,2,3,4,7,8- H ₆ CDF	0.011	0.0008	0.1	0.0011	
1,2,3,6,7,8- H ₆ CDF	0.011	0.0004	0.1	0.0011	
2,3,4,6,7,8- H ₆ CDF	0.0096	0.0004	0.1	0.00096	
1,2,3,7,8,9- H ₆ CDF	0.0006	0.0004	0.1	0.00006	
1,2,3,4,6,7,8- H ₇ CDF	0.044	0.0004	0.01	0.00044	
1,2,3,4,7,8,9- H ₇ CDF	0.0036	0.0005	0.01	0.000036	
8CDF	0.048	0.0005	0.001	0.000048	
2,3,7,8- 4CDD	0.0011	0.0006	1	0.0011	
1,2,3,7,8- 5CDD	0.0010	0.0006	0.5	0.0005	
1,2,3,4,7,8- H ₆ CDD	0.0011	0.0005	0.1	0.00011	
1,2,3,6,7,8- H ₆ CDD	0.0014	0.0004	0.1	0.00014	
1,2,3,7,8,9- H ₆ CDD	0.0019	0.0007	0.1	0.00019	
1,2,3,4,6,7,8- H ₇ CDD	0.017	0.0006	0.01	0.00017	
8CDD	0.094	0.0005	0.001	0.000094	
				0.014	

*** **



/ - HAEED- -771 A/1

HB-2090050-HJ-67C1

8 / 11

2023.09.12 20:47- 17:47

2,3,7,8-^{1,2,3,4,6,7,8}-OCDF 0.0/ C

I- EF

E / 3

2023.09.12 18:54- 16:54

		/ 3		I- EF	E / 3
2,3,7,8- CDF	0.0039	0.0004	0.1	0.00039	
1,2,3,7,8- 5CDF	0.0045	0.0004	0.05	0.000225	
2,3,4,7,8- 5CDF	0.0043	0.0004	0.5	0.00215	
1,2,3,4,7,8- H ₆ CDF	0.0043	0.0008	0.1	0.00043	
1,2,3,6,7,8- H ₆ CDF	0.0043	0.0004	0.1	0.00043	
2,3,4,6,7,8- H ₆ CDF	0.0034	0.0004	0.1	0.00034	
1,2,3,7,8,9- H ₆ CDF	N.D.	0.0004	0.1	0.00002	
1,2,3,4,6,7,8- H ₇ CDF	0.017	0.0004	0.01	0.00017	
1,2,3,4,7,8,9- H ₇ CDF	0.0019	0.0005	0.01	0.000019	



2023.09.11 15:03-		13:03			
		/ 3		E	
				I- EF E / 3	
2,3,7,8-	4CDD	0.010	0.0004	0.1	0.001
1,2,3,7,8-	5CDF	0.011	0.0004	0.05	0.00055
2,3,4,7,8-	5CDF	0.014	0.0004	0.5	0.007
1,2,3,4,7,8-	H ₆ CDF	0.015	0.0008	0.1	0.0015
1,2,3,6,7,8-	H ₆ CDF	0.013	0.0004	0.1	0.0013
2,3,4,6,7,8-	H ₆ CDF	0.010	0.0004	0.1	0.001
1,2,3,7,8,9-	H ₆ CDF	0.0015	0.0004	0.1	0.00015
1,2,3,4,6,7,8-	H ₇ CDF	0.048	0.0004	0.01	0.00048
1,2,3,4,7,8,9-	H ₇ CDF	0.0049	0.0005	0.01	0.000049
	8CDF	0.051	0.0005	0.001	0.000051
2,3,7,8-	4CDD	0.0011	0.0006	1	0.0011
1,2,3,7,8-	5CDD	0.0014	0.0006	0.5	0.0007
1,2,3,4,7,8-	H ₆ CDD	0.0014	0.0005	0.1	0.00014
1,2,3,6,7,8-	H ₆ CDD	0.0018	0.0004	0.1	0.00018
1,2,3,7,8,9-	H ₆ CDD	0.0016	0.0007	0.1	0.00016
1,2,3,4,6,7,8-	H ₇ CDD	0.018	0.0006	0.01	0.00018
	8CDD	0.067	0.0005	0.001	0.000067
					0.016

- 1.
2. (E) EF
3. E 2,3,7,8- 4CDD EF I- EF / 3
4. N.D. E 1/2

*** **



1.

D 1-2

2.

3.

4.

027-59610106

6.

7.

8.